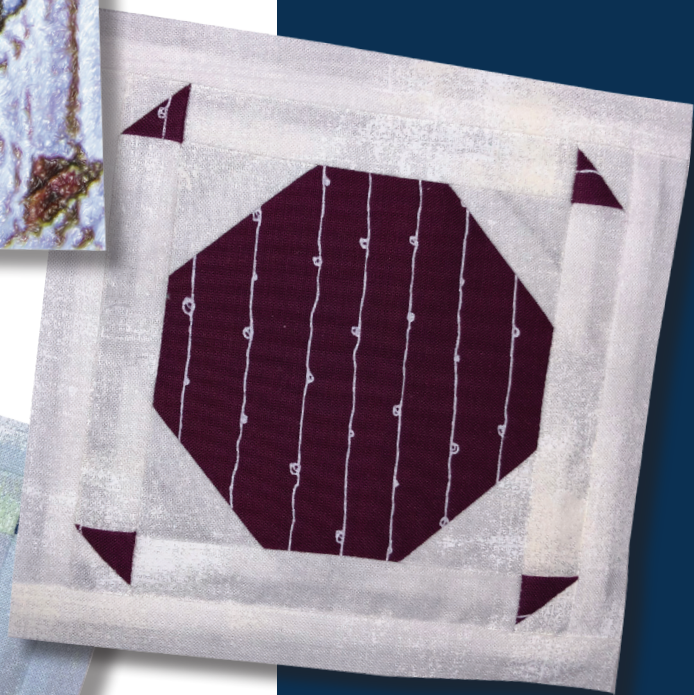
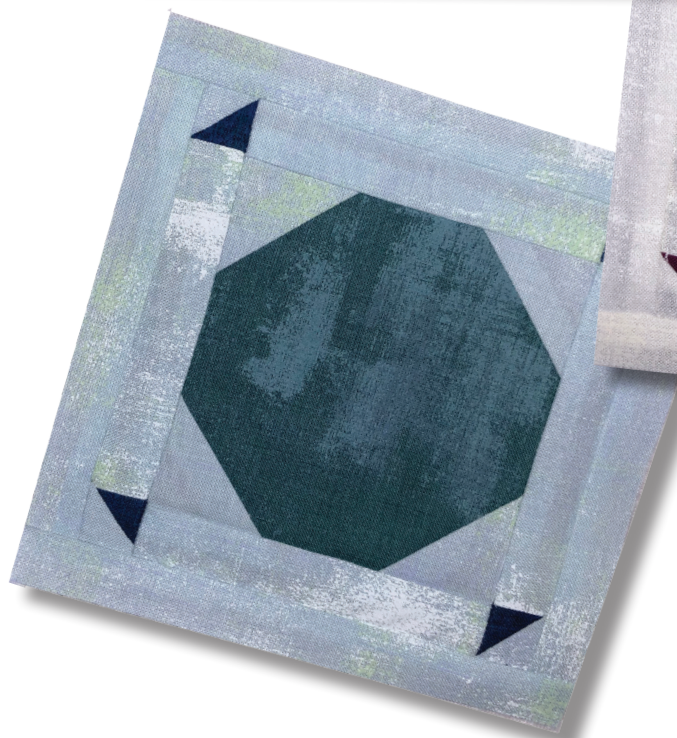
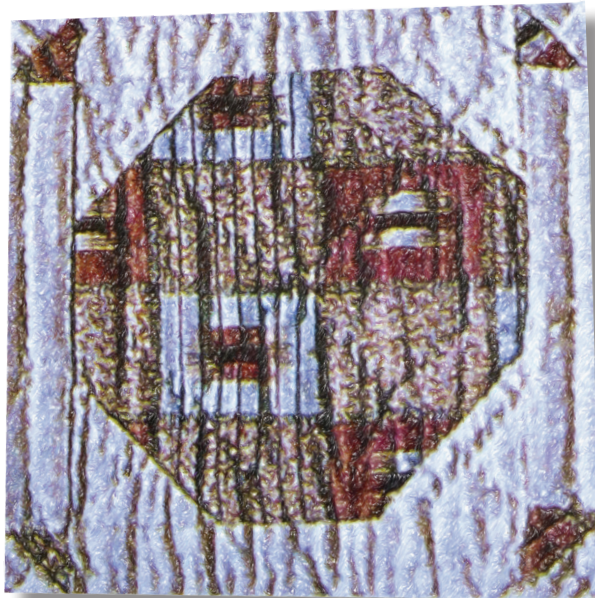
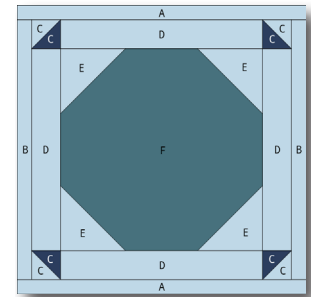


## The Jane Stickle Quilt - Block F3

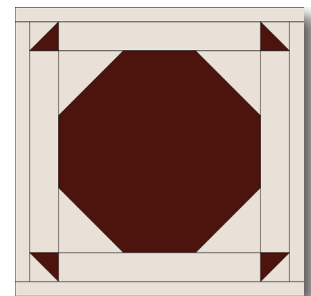


### What you need:

Patches	Quantity/size
A*	(2) 1" x 6"
B*	(2) 1" x 5"
C	(2) 2" x 2" - light blue, cut once diagonally (2) 2" x 2" - navy, cut once diagonally
D	(4) 1½" x 4½"
E	(2) 2½" x 2½", cut once diagonally
F	(1) 5" x 5"



*Hobbystash Colorway*

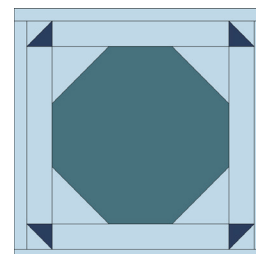
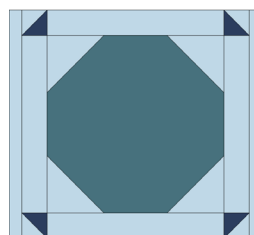
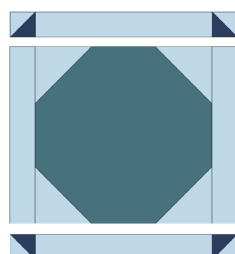


*Jane Stickle Colorway*

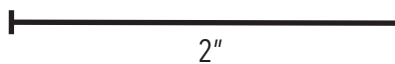
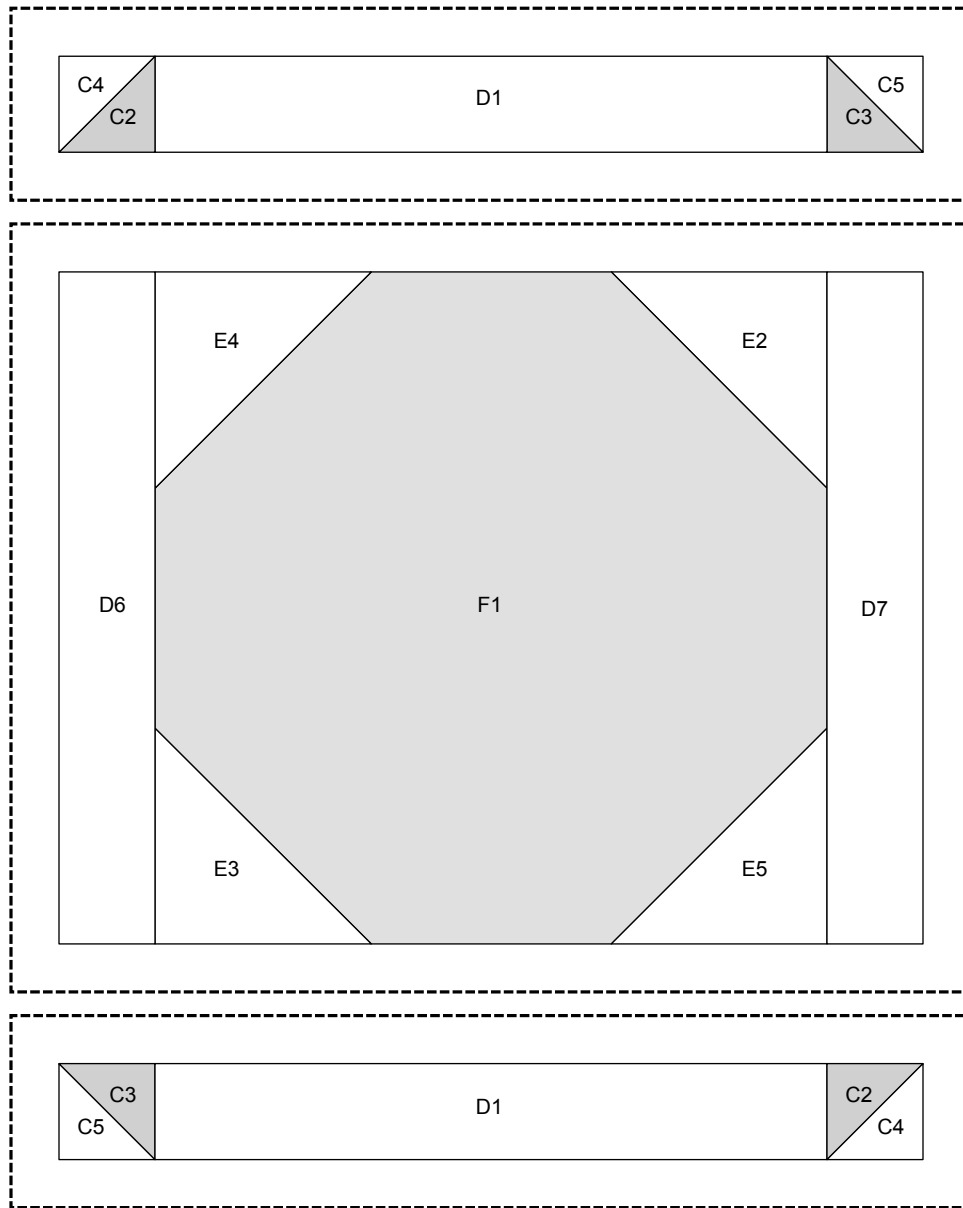
*\*The actual required width for Unit A and Unit B units is ¾". The increased width specified above allows for squaring the block to exactly 5½".*

### Assembly:

1. Using the templates provided on Page F3-2, foundation piece the sections of the block.
2. Assemble the sections and sew together.
3. Join Unit B to the right side of the block, and then the left.
4. Join Unit A to the top of the block and then the bottom. Square up block to measure 5½" x 5½" square.



SET PRINTER TO "ACTUAL SIZE" WHEN PRINTING THIS PAGE.



SET PRINTER TO "ACTUAL SIZE" WHEN PRINTING THIS PAGE.

