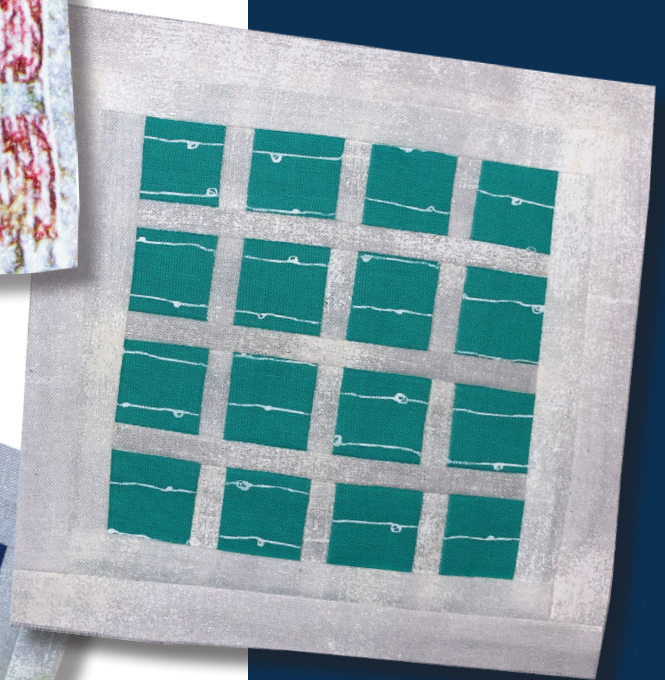
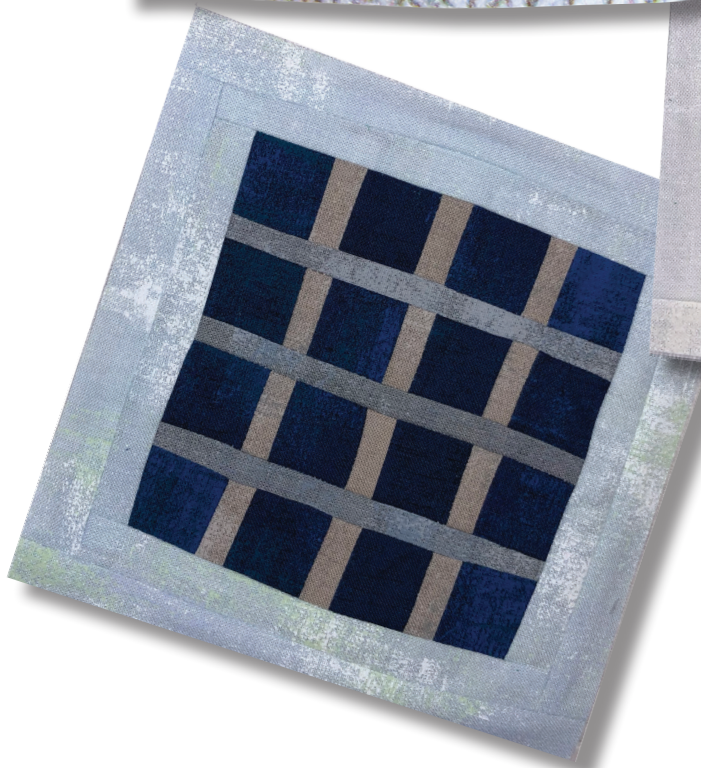
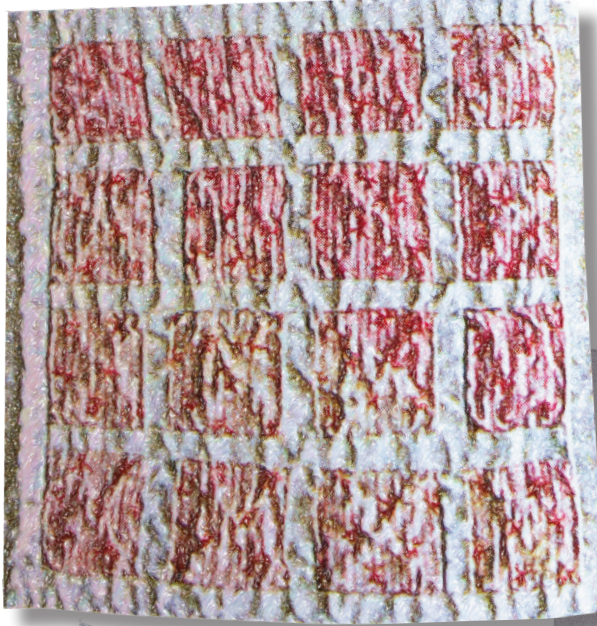
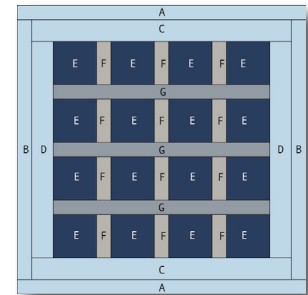


The Jane Stickle Quilt - Block E9

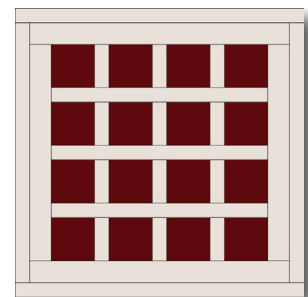


What you need:

Patches	Quantity/size	
A*	(2) 1" x 6"	*The actual required width for Unit A and Unit B units is ¾". The increased width specified above allows for squaring the block to exactly 5½".
B*	(2) 1" x 5"	
C	(2) 7/8" x 5"	
D	(2) 7/8" x 4¼"	
E	(4) 1¼" x 5½"	
F	(3) ¾" x 5½"	
G	(3) ¾" x 4¼"	



Hobbystash Colorway



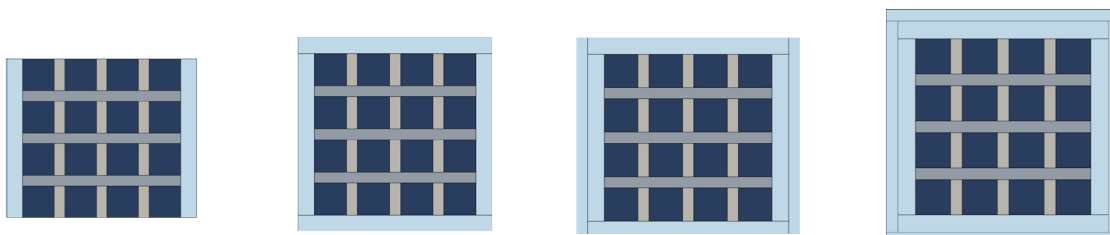
Jane Stickle Colorway

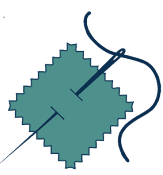
Assembly:

1. Assemble and sew together four Unit E strips and three Unit F strips as shown. Cut into four 1¼" x 4¼" rows.
2. Assemble and sew together four Step1 rows and three Unit G strips as shown.



3. Attach Unit D to each side as shown.
4. Attach Unit C to top and bottom as shown.
5. Join Unit B to the right side of the block, and then the left.
6. Join Unit A to the top of the block and then the bottom. Square up block to measure 5½" x 5½".





SET PRINTER TO "ACTUAL SIZE" WHEN PRINTING THIS PAGE.

