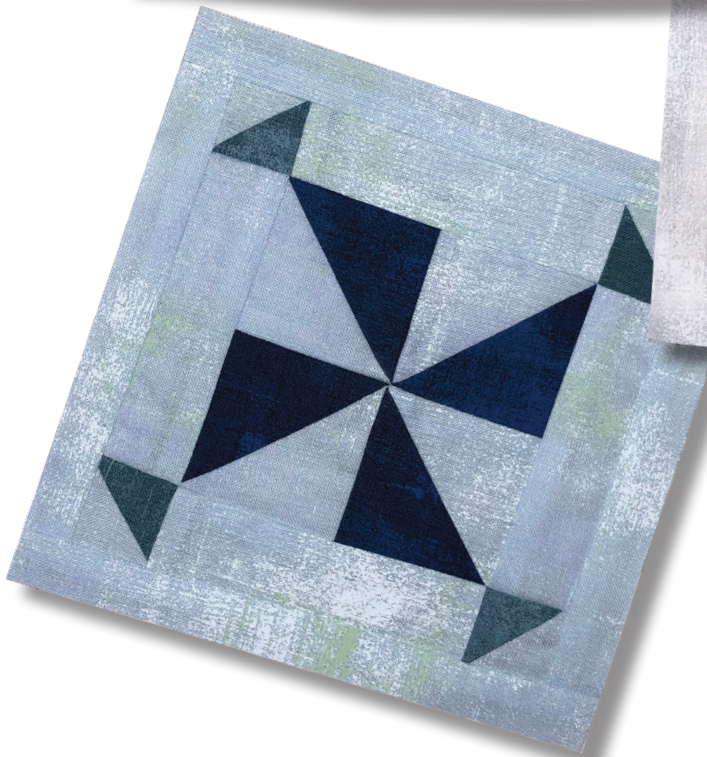
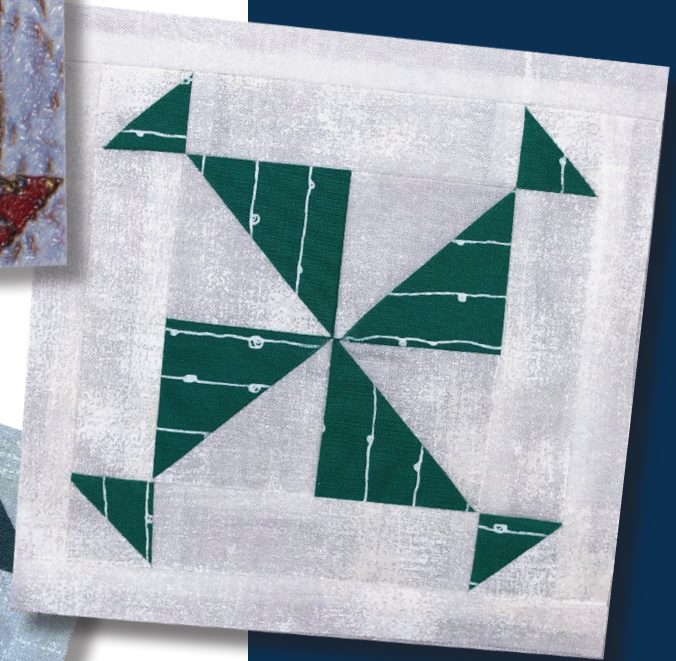
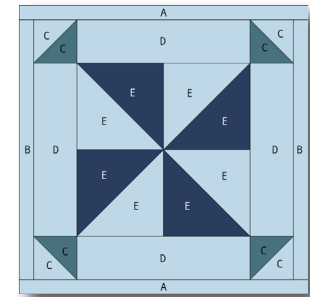


The Jane Stickle Quilt - Block E3

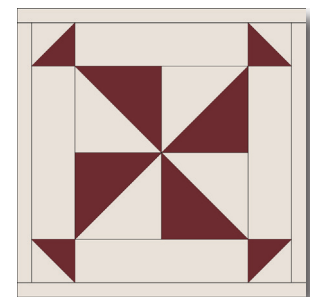


What you need:

Patches	Quantity/size
A*	(2) 1" x 6"
B*	(2) 1" x 5"
C	(2) 1⅝" x 1⅝" - light blue (2) 1⅝" x 1⅝" - green
D	(4) 1¼" x 3½"
E	(2) 2⅜" x 2⅜" - light blue (2) 2⅜" x 2⅜" - navy



Hobbystash Colorway



Jane Stickle Colorway

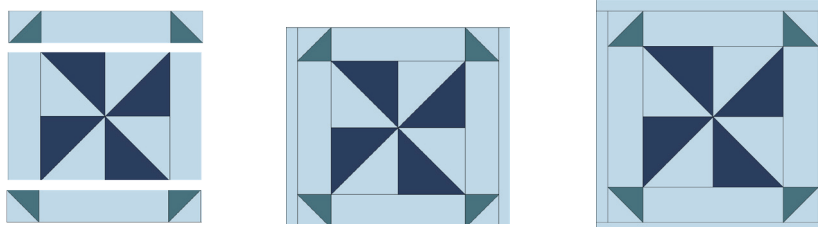
**The actual required width for Unit A and Unit B units is ¾". The increased width specified above allows for squaring the block to exactly 5½".*

Assembly:

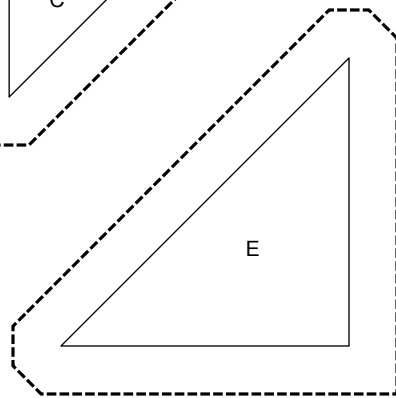
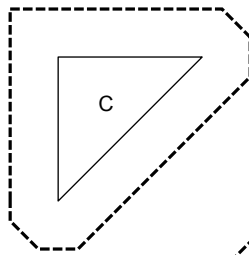
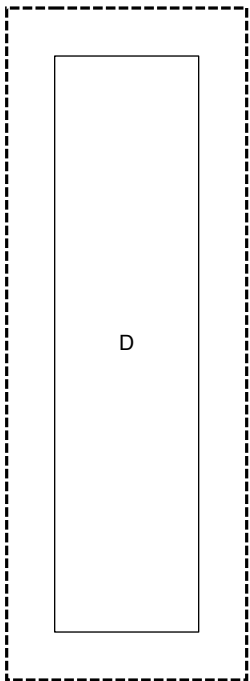
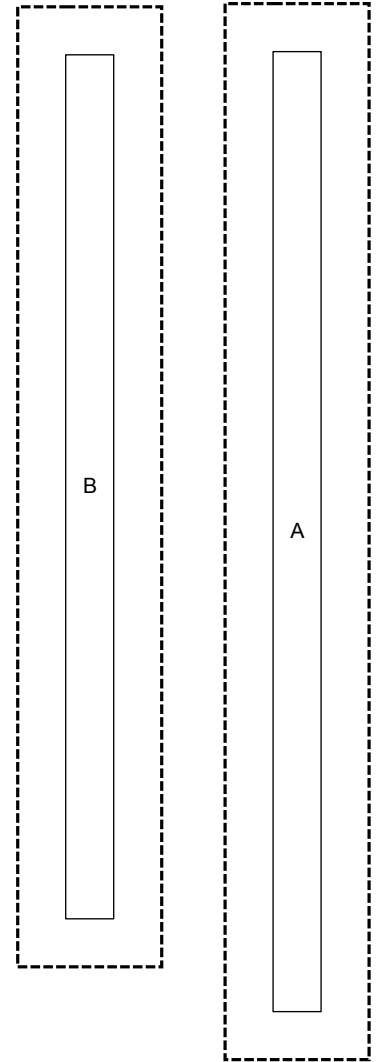
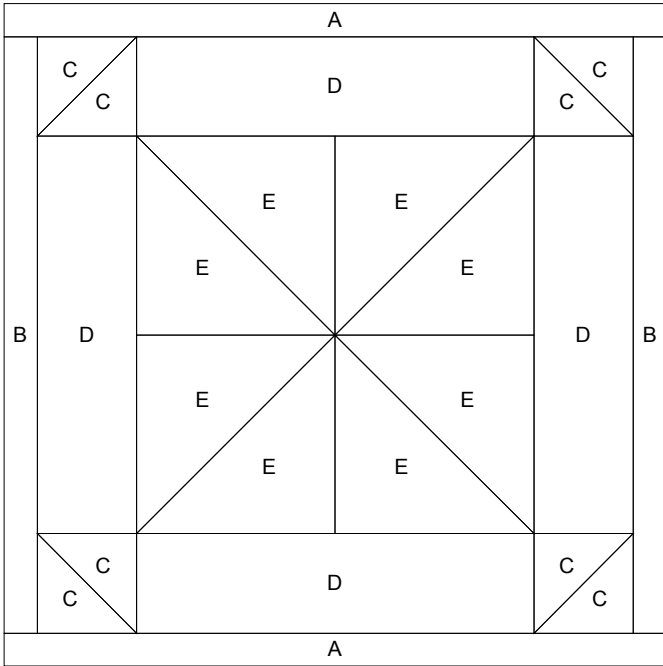
- Referring to BASIC INSTRUCTIONS FOR half-square triangles (HST) two at a time, layer a light blue and a green Unit C. Make a total of four units. Attach each HST unit made to opposite sides of Unit D as shown. Make two.



- Layer a light blue and a navy Unit E to make HSTs. Make a total of four units. Sew together the four units as shown. Attach remaining Unit D to each side as shown.
- Sew together rows from Step 1 and Step 2 as shown.
- Join Unit B to the right side of the block, and then the left.
- Join Unit A to the top of the block and then the bottom. Square up block to measure 5½" x 5½"



SET PRINTER TO "ACTUAL SIZE" WHEN PRINTING THIS PAGE.



2"