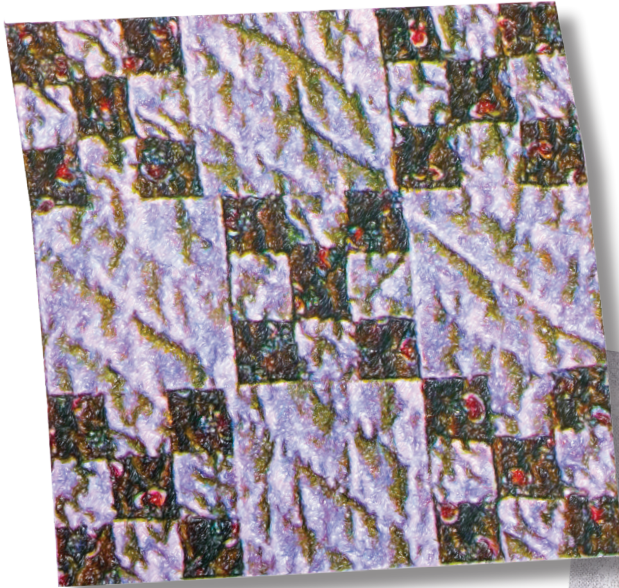
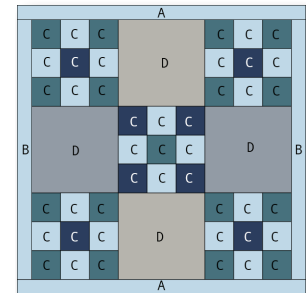


The Jane Stickle Quilt - Block C12

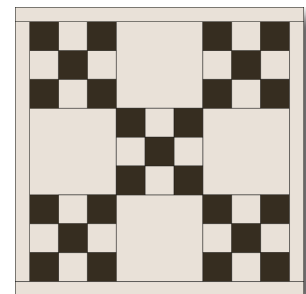


What you need:

Patches	Quantity/size
A*	(2) 1" x 6"
B*	(2) 1" x 5"
C	(17) 1" x 1" - green (8) 1" x 1" - navy (20) 1" x 1" - light blue
D	(2) 2" x 2" - gray (2) 2" x 2" - beige



Hobbystash Colorway

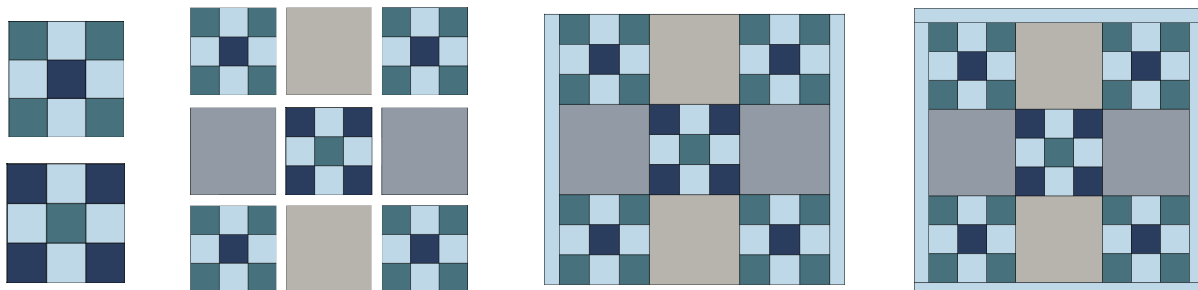


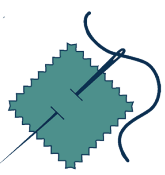
Jane Stickle Colorway

**The actual required width for Unit A and Unit B units is ¾". The increased width specified above allows for squaring the block to exactly 5½".*

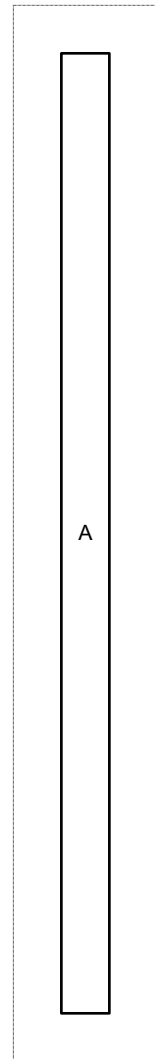
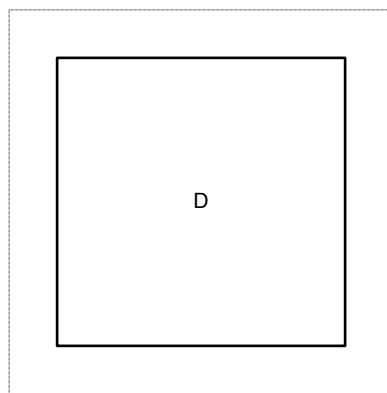
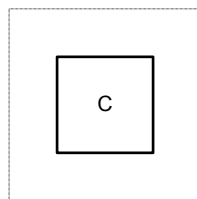
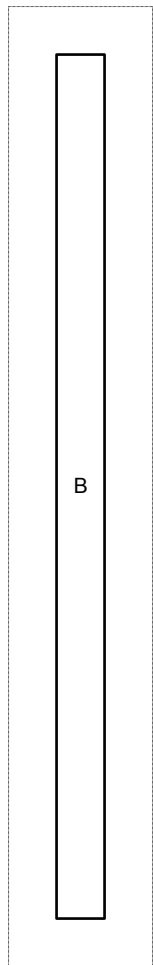
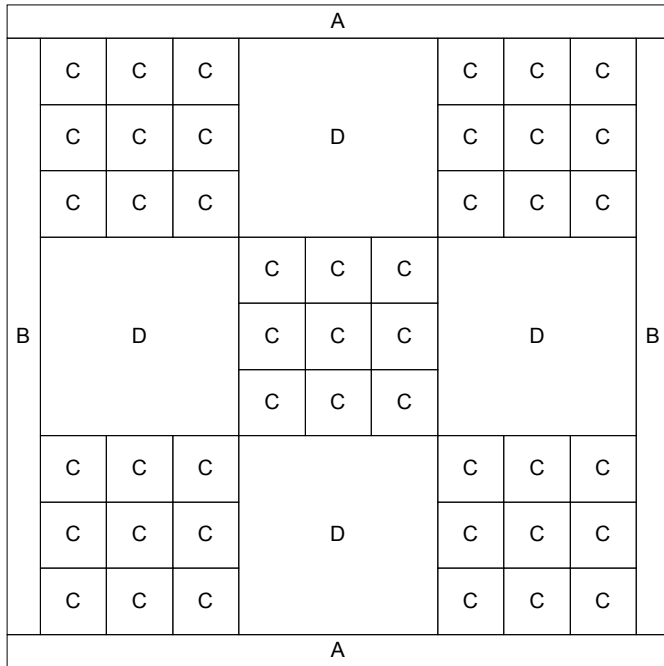
Assembly:

1. Arrange four light blue Unit C, one navy Unit C, and four green Unit C as shown and sew together. Make four.
2. Arrange four light blue Unit C, one green Unit C, and four navy Unit C as shown and sew together.
3. Arrange two units from Step 1 and one beige Unit D as shown and sew together. Make two.
4. Arrange unit from Step 2 with two gray Unit D as shown and sew together.
5. Arrange units from Step 3 and Step 4 as shown and sew together.
6. Join Unit B to the right side of the block, and then the left.
7. Join Unit A to the top of the block and then the bottom. Square up block to measure 5½" x 5½"





SET PRINTER TO "ACTUAL SIZE" WHEN PRINTING THIS PAGE.



2"