

Arkansas Crossroads



Baby 40" x 40"

Throw 76" x 76"

Twin 76" x 92"

Queen 92" x 108"

King 108" x 124"

The Arkansas Crossroads pattern has been floating around for years. This pattern compliments Missouri Star Quilt's YouTube video titled [4 Patch Quilt + X's and O's = Goodnight Irene Quilt!](#) and provides additional size options. It's a fabulous quilt for reducing stash scraps!

Fabric Requirements

Fabric	Baby	Throw	Twin	Queen	King
Scraps yardage OR jelly roll strips	½ yard OR 5 strips	1¾ yards OR 25 strips	2¼ yards OR 32 strips	3½ yards OR 50 strips	5 yards OR 72 strips
Contrast for corners yardage OR jelly roll strips	½ yard OR 4 strips	1¼ yards OR 16 strips	1½ yards OR 20 strips	2¼ yards OR 30 strips	3 yards OR 42 strips
Background	1¼ yards	4 yards	4½ yards	5¾ yards	7½ yards
Backing	2¾ yards	2½ yards 90" wide backing	3 yards 90" wide backing	3¼ yards 108" wide backing	4¼ yards 108" wide backing
Batting	50" x 50"	86" x 86"	86" x 102"	102" x 118"	118" x 134"
Binding	½ yard (4 strips)	¾ yard (8 strips)	¾ yard (9 strips)	¾ yard (10 strips)	1 yard (12 strips)

What you need for each block:

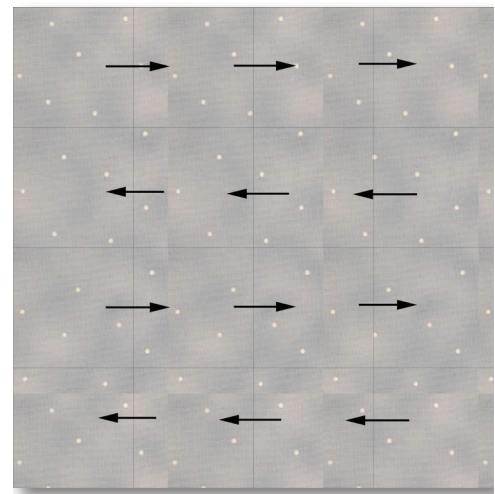
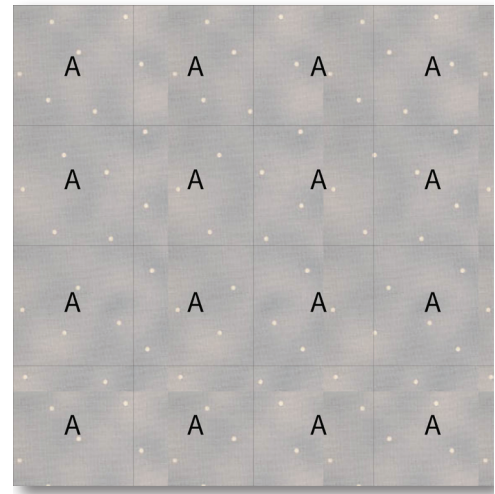
Unit / Fabric	(Quantity) Size
A / scraps	(16) / 2½" x 2½"

How many blocks are needed:

Quilt size	Blocks	A units
Baby	5	80
Throw	25	400
Twin	32	512
Queen	49	800
King	72	1152

Assembly:

1. Following the diagram, piece together sixteen patch block. Press seams as shown.

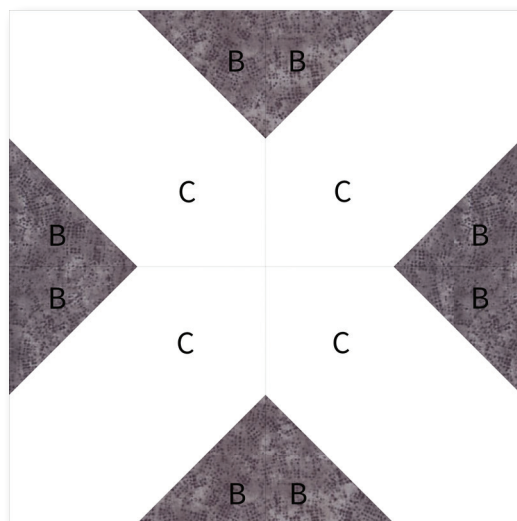


What you need for each block:

Unit / Fabric	(Quantity) / Size
B / contrast fabric	(4) / 2½" x 2½"
C / background fabric	(4) / 4½" x 4½"

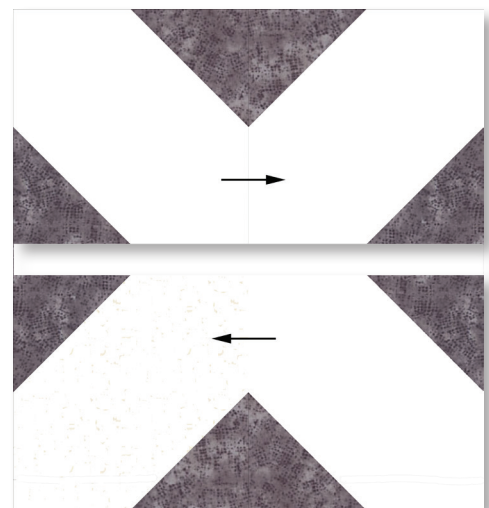
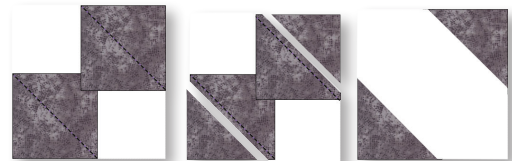
How many blocks are needed:

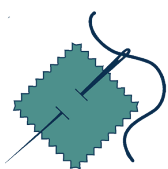
Quilt Size	Quantity
Baby	4
Throw	24
Twin	31
Queen	48
King	71



Assembly:

1. Place two Unit B on top of Unit C, right sides together, on opposite corners as shown. Sew diagonally across corner. Trim seams and press towards Unit B.
2. Arrange four patches to form an X. Sew together to form block.





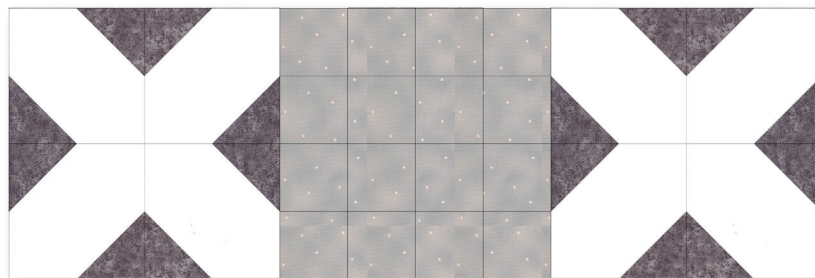
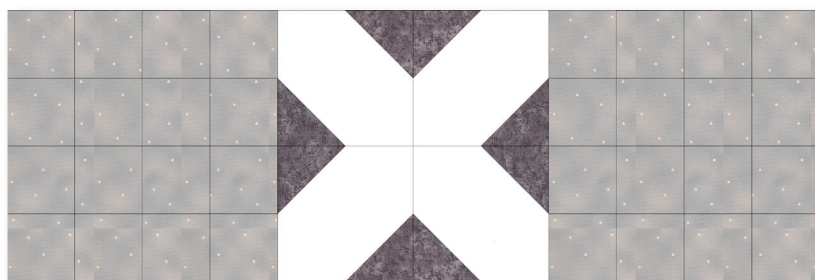
What you need:

Block	Quantity/Size
Sixteen-Patch	5 / Baby 25 / Throw 32 / Twin 49 / Queen 72 / King
Crossroads	4 / Baby 24 / Throw 31 / Twin 48 / Queen 71 / King

Assembly:

Referring to [Size & Block Arrangement](#) on Page 8, assemble the necessary blocks for each row, alternating Row 1 and Row 2 as shown. Press seams towards the sixteen patch blocks in each row.

Join the rows.



What you need for each block:

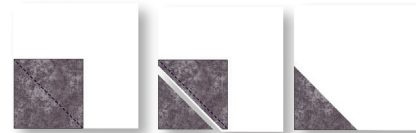
Unit / Fabric	(Quantity) / Size
B / contrast	(1) / 2½" x 2½"
C / background	(1) / 4½" x 4½"

How many blocks are needed:

Quilt Size	Quantity
Baby (24 total)	6 Left 6 Right 6 Top plus 2 (4½" x 4½") corners 6 Bottom plus 2 (4½" x 4½") corners
Throw (56 total)	14 Left 14 Right 14 Top plus 2 (4½" x 4½") corners 14 Bottom plus 2 (4½" x 4½") corners
Twin (64 total)	18 Left 18 Right 14 Top plus 2 (4½" x 4½") corners 14 Bottom plus 2 (4½" x 4½") corners
Queen (80 total)	22 Left 22 Right 18 Top plus 2 (4½" x 4½") corners 18 Bottom plus 2 (4½" x 4½") corners
King (96 total)	26 Left 26 Right 22 Top plus 2 (4½" x 4½") corners 22 Bottom plus 2 (4½" x 4½") corners

Assembly:

1. Place Unit B on top of Unit C right sides together on corner as shown. Sew diagonally across corner. Trim seams and press towards Unit B.



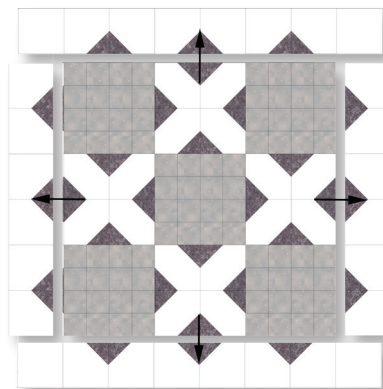
2. Based on size selected, arrange patches as shown to form each border row.

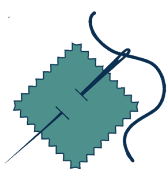


3. Cut four 4½" squares from background fabric. Attach one to each end of the top and bottom borders.



4. Attach the left and right inner borders to the top assembled from Page 5 Press seam towards border.
5. Attach the top and bottom inner borders to the top. Press seam towards border.



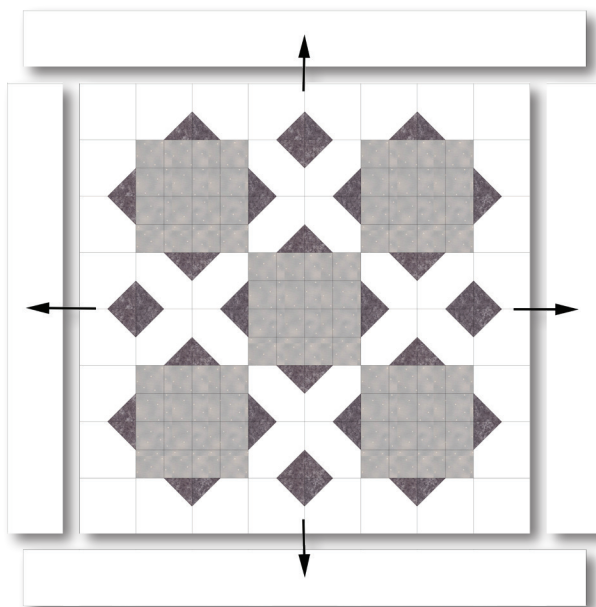


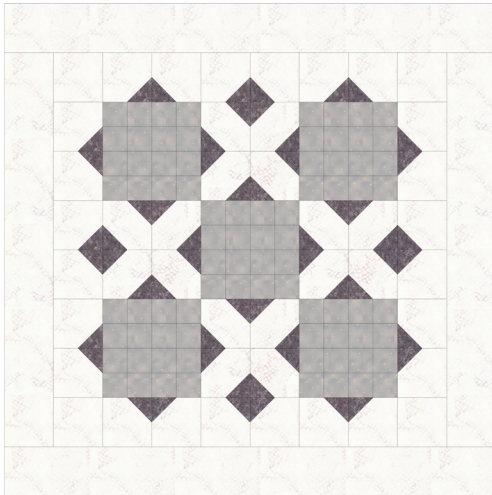
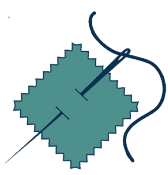
What you need:

Unit	Quantity/Size
Baby	4 / 4½" x width of fabric/ FOR 2 / 32½" strips (left/right) 2 / 40½" strips (top/bottom)
Throw	7 / 6½" x width of fabric FOR 2 / 64½" strips (left/right) 2 / 76½" strips (top/bottom)
Twin	8 / 6½" x width of fabric FOR 2 / 80½" strips (left/right) 2 / 76½" strips (top/bottom)
Queen	10 / 6½" x width of fabric FOR 2 / 96½" strips (left/right) 2 / 92½" strips (top/bottom)
King	11 / 6½" x width of fabric FOR 2 / 112½" strips (left/right) 2 / 108½" (top/bottom)

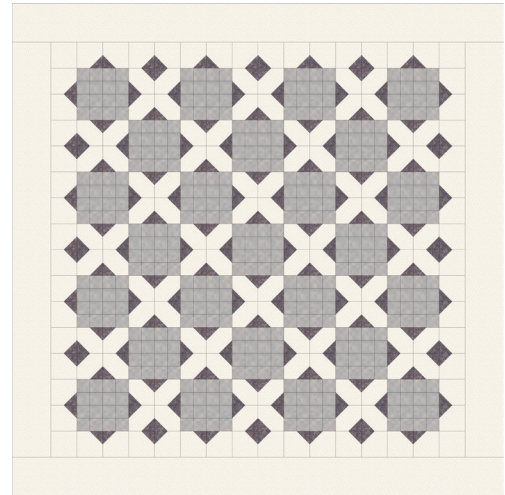
Assembly:

1. For the outer border, sew the strips indicated for the quilt size end to end (For the baby quilt, it is not necessary to join the WOF strips before cutting the indicated lengths for the borders).
2. From the long strip, cut two strips the size indicated for the left and right sides of the quilt. Attach to the quilt. Press seams towards the outer border.
3. From the remainder of the long strip, cut two strips the size indicated for the top and bottom sides of the quilt. Attach to the quilt. Press seams towards the outer border.
4. Layer, quilt as desired, and bind.

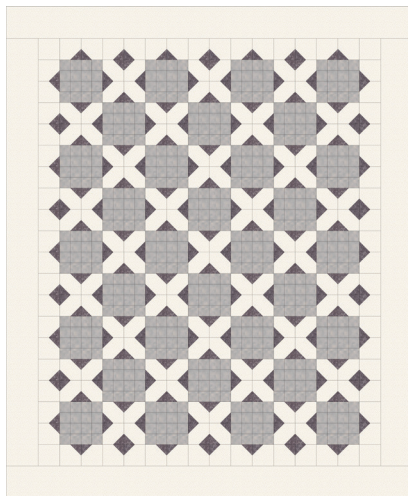




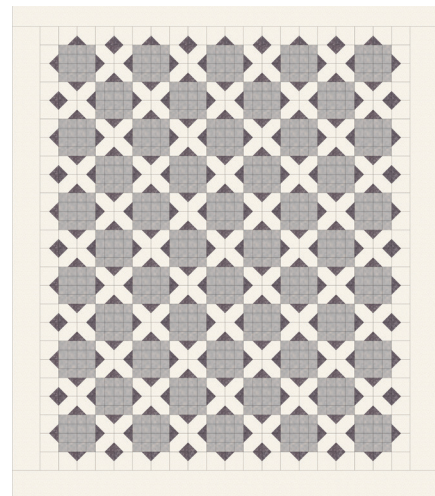
Baby - 40" x 40"



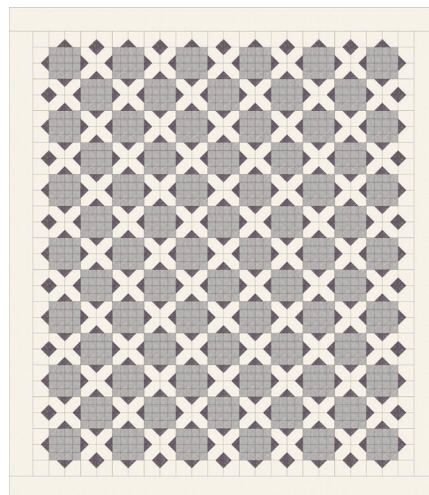
Throw - 76" x 76"



Twin - 76" x 92"



Queen - 92" x 108"



King - 108" x 124"