

Scrub Mask



What you need:

1. One Fat Quarter (18" x 22")
2. Lightweight fusible interfacing (7" x 8½") - optional

Cutting:

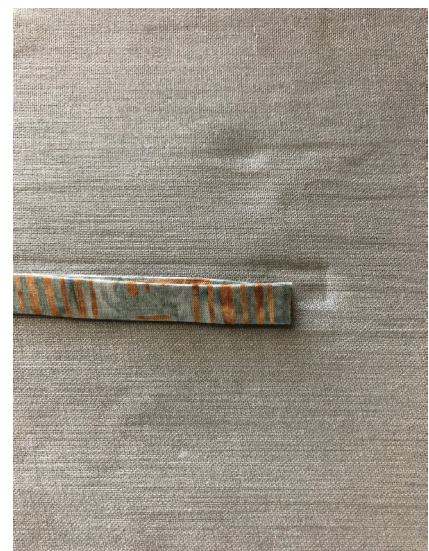
1. Fold fat quarter so that the two 18" ends are together.
2. Cut one 7½" strip and five 1½" strips.
3. Cut the 7½" strip into two rectangles 7½" x 9"

Assembly:

1. Sew the two 1½" strips together end-to-end as shown. Trim seam allowance and press open. Repeat for a second tie.



2. Press ½ inch of each end over as shown. Press sides to middle wrong sides together as shown. Fold over and press once more. You now have two long ties to be attached to the top and bottom of the mask as binding and tie. For the remaining single strip, eliminate folding over the ends; repeat the remaining fold over procedures to form the side binding.



3. Iron interfacing to wrong side of one of the 7½" x 9" rectangles. This step is optional but I wanted to provide an extra layer of protection.



4. It is recommended that the inside fabric be a different pattern or color from the outside so that wearer can differentiate the inside from the outside. Since I am using batik fabrics I chose to use two fat quarters and make two masks at a time as it is usually impossible to determine right and wrong sides of a batik fabric. If you are using a single fabric that clearly indicates right and wrong sides, place wrong side of *non-interfaced* rectangle to right side of *interfaced* rectangle and sew a ¼-inch seam allowance along the long sides. By doing this, the wearer will be able to determine the inside versus outside of the mask. If you are using two fabrics, place the two rectangles right sides together (one interfaced and one non-interfaced) and sew a ¼-inch seam allowance along the long sides. This option allows the wearer to determine which fabric will face outward that day. Turn tube right side out and press.



5. Mark 1" segments on each of the open ends of the tube. You should have six marks on each end.



6. To make the three pleats, on one end fold over the fabric matching mark to mark three times. Use a pin or wonder clip to hold in place. The pleats on the completed mask should face downward on the outside. If you are using a fabric with a directional pattern, take care to orient your pleats correctly. If you had hearts for example, you don't want them upside down when the user wears the mask. Repeat the process for the other end, matching fold direction to the first end. Press pleats.



7. Using side binding strip from Step 2, sew binding over each end and trim.



8. Center first strip over top edge of binding. Pin in place. Starting at end of binding, sew first side of binding closed, continue to sew along top edge of mask, and then continue sewing to the end of the binding. Repeat the process for the bottom edge of the mask.

